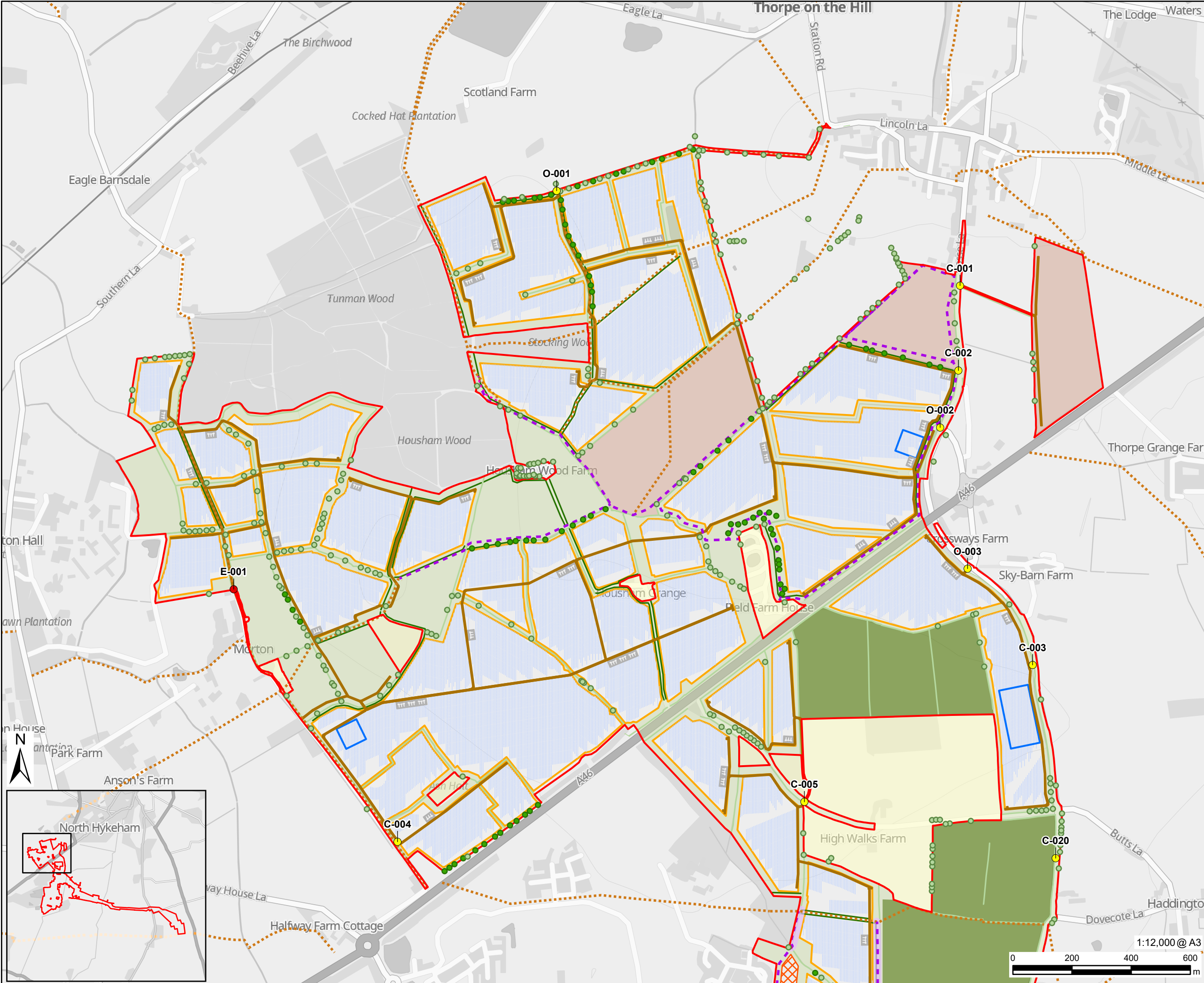


File name: \\NUN\cna.aecom\m\london\UK\ON06\PEIR\Figures\Figures.aprx
Project No.: 60700987 Drawn: HW Checked: AM Approved: LB Date: 2025-07-15



PROJECT

Fosse Green Energy

CLIENT

Fosse Green Energy Ltd

CONSULTANT

AECOM Limited
Sunley House
4 Bedford Park
Surrey, CR0 2AP, UK
www.aecom.com

LEGEND

- DCO Site Boundary
- Land Not Included in Site Boundary
- Indicative Single Axis Tracker Layout
- PV Panels
- Solar PV Array Area
- Solar Station Compound
- Construction Compound
- Retained Arable and Grassland
- Bird Mitigation Area - Permanent Grassland
- Bird Mitigation Area - Managed Arable
- Access Tracks
- Construction and Operation Access Point
- Emergency Access Point
- Retained Permissive Paths
- Proposed Permissive Paths
- Public Right of Way
- Public Right of Way Diversion
- Existing Tree
- Proposed Tree
- Community Orchard - Open Access
- Proposed Hedgerow
- Existing Hedgerows

NOTES

Contains OS data © Crown Copyright and database right 2025
Contains data from OS Zoomstack

LEGISLATION

Regulation 5(2)(a) Infrastructure Planning (Applications: Prescribed Forms and Procedure) Regulations 2009.

ISSUE PURPOSE

DCO Submission

FIGURE TITLE

Indicative Single Axis Tracker Site Layout Plan

FIGURE NUMBER

Figure 3-2B SHEET 1

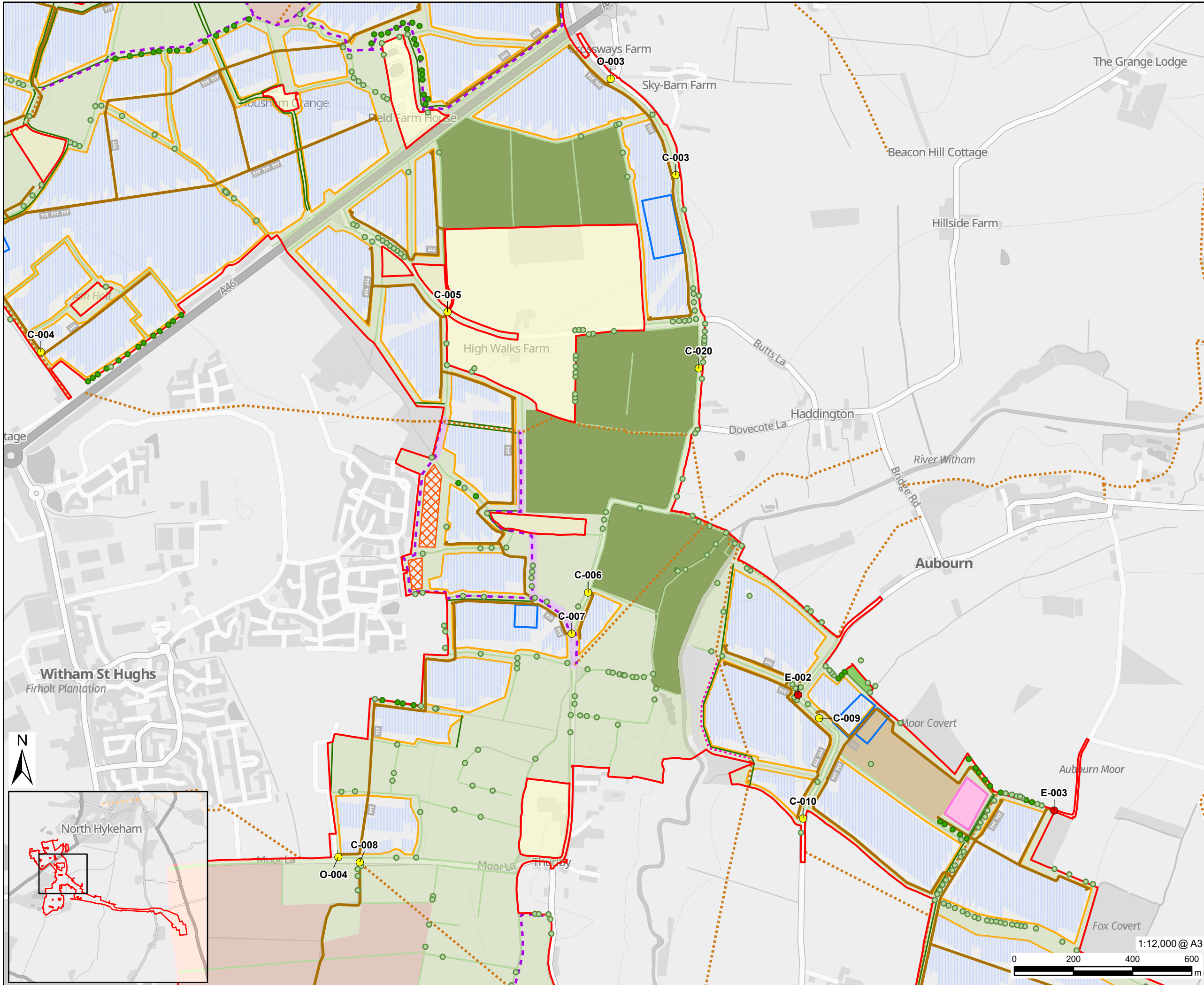
REV.

01

DOCUMENT REFERENCE

EN010154/APP/6.2.

File name: I:\NUNCria.aecomnet.com\ls\EMEAL\ondon\UK\ON06\FFPS W001\UK\ON06\FFPS W001\Y1\DP\Library\GIS_DATA\Projects\Fosse Green Energy Park\02_Maya Environmental Statement\Chapter 03 - Alternatives and Design Evolution\PER_Chapter3_Alternatives_DesignEvolution_Figures.aprx
Project No.: 60700987 Drawn: HW Checked: AM Approved: LB Date: 2025-07-15



PROJECT

Fosse Green Energy

CLIENT

Fosse Green Energy Ltd

CONSULTANT

AECOM Limited
Sunley House
4 Bedford Park
Surrey, CR0 2AP, UK
www.aecom.com

LEGEND

- DCO Site Boundary
- Land Not Included in Site Boundary
- Indicative Single Axis Tracker Layout
 - PV Panels
 - Solar PV Array Area
 - Solar Station Compound
 - Construction Compound
 - Onsite Substation
 - BESS Compound
 - Retained Arable and Grassland
 - Bird Mitigation Area - Permanent Grassland
 - Bird Mitigation Area - Managed Arable
 - Access Tracks
 - Construction and Operation Access Point
 - Emergency Access Point
 - Retained Permissive Paths
 - Proposed Permissive Paths
 - Public Right of Way
 - Public Right of Way Diversion
 - Existing Tree
 - Proposed Tree
 - Proposed Belt Of Trees
 - Community Orchard - Open Access
 - Proposed Hedgerow
 - Existing Hedgerows

NOTES

Contains OS data © Crown Copyright and database right 2025
Contains data from OS Zoomstack

LEGISLATION

Regulation 5(2)(a) Infrastructure Planning (Applications: Prescribed Forms and Procedure) Regulations 2009.

ISSUE PURPOSE

DCO Submission

FIGURE TITLE

Indicative Single Axis Tracker Site Layout Plan

FIGURE NUMBER

Figure 3-2B SHEET 2

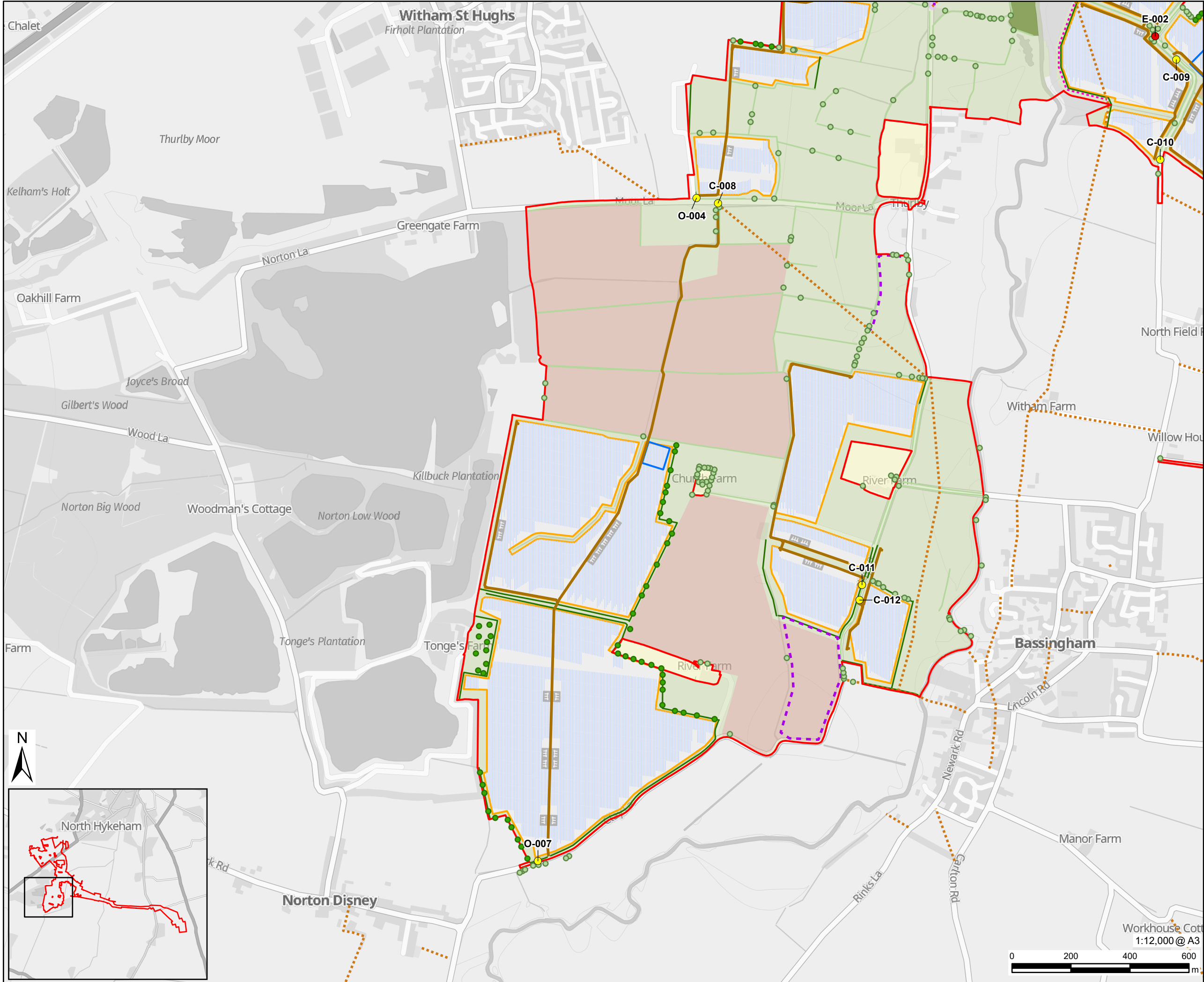
REV.

01

DOCUMENT REFERENCE

EN010154/APP/6.2.

Filename: I:\NUNCrna.aecomnet.com\is\EMEALondon\UK\ON06\PFPSW001\UK\ON06\PFPSW001\Y1\DP\Library\GIS_DATA\Projects\Fosse Green Energy Park\02_Maps\Environmental Statement\Chapter 03 - Alternatives and Design Evolution\PER_Chapter3_Alternatives_DesignEvolution_Figures.aprx Project No.: 60700987 Drawn: HW Checked: AM Approved: LB Date: 2025-07-15



PROJECT

Fosse Green Energy

CLIENT

Fosse Green Energy Ltd

CONSULTANT

AECOM Limited
Sunley House
4 Bedford Park
Surrey, CR0 2AP, UK
www.aecom.com

LEGEND

- DCO Site Boundary
- Land Not Included in Site Boundary
- Indicative Single Axis Tracker Layout
- PV Panels
- Solar PV Array Area
- Solar Station Compound
- Construction Compound
- BESS Compound
- Retained Arable and Grassland
- Bird Mitigation Area - Permanent Grassland
- Bird Mitigation Area - Managed Arable
- Access Tracks
- Construction and Operation Access Point
- Emergency Access Point
- Retained Permissive Paths
- Proposed Permissive Paths
- Public Right of Way
- Public Right of Way Diversion
- Existing Tree
- Proposed Tree
- Proposed Belt Of Trees
- Proposed Hedgerow
- Existing Hedgerows

NOTES

Contains OS data © Crown Copyright and database right 2025
Contains data from OS Zoomstack

LEGISLATION

Regulation 5(2)(a) Infrastructure Planning
(Applications: Prescribed Forms and Procedure) Regulations 2009.

ISSUE PURPOSE

DCO Submission

FIGURE TITLE

Indicative Single Axis Tracker Site
Layout Plan

FIGURE NUMBER

Figure 3-2B SHEET 3

REV.

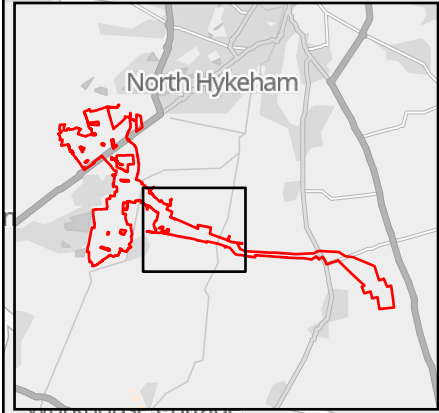
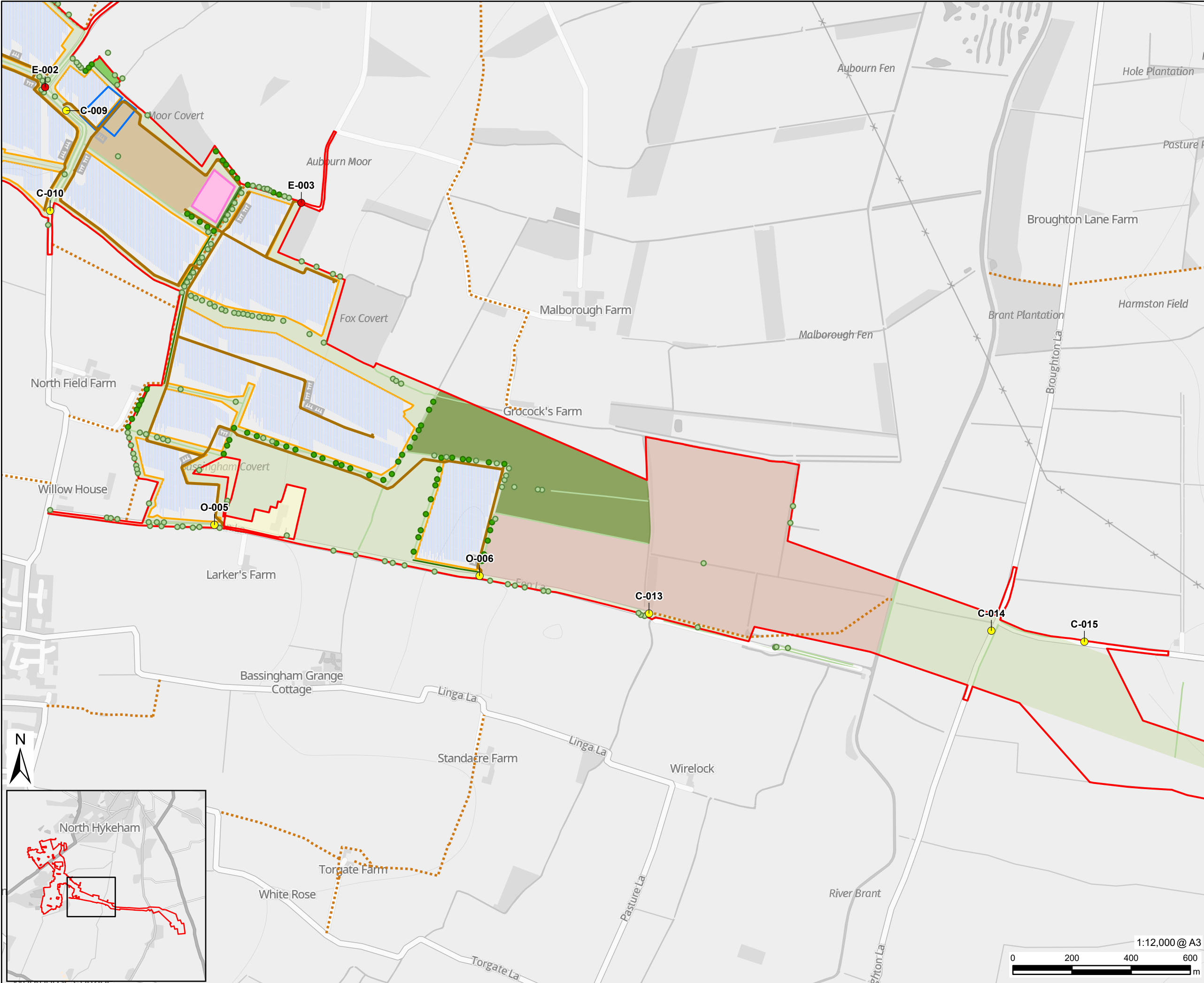
01

DOCUMENT REFERENCE

EN010154/APP/6.2.

Filename: \\NUNCrna.aecomnet.com\its\EMEALondon\UK\ON06\Legac\UK\ON06\FPSW001\Y1\DP\Library\GIS_DATA\Projects\Fosse Green Energy Park\02_Maps\Environmental Statement\Chapter 03 - Alternatives and Design Evolution\PER_Chapter3_Alternatives_DesignEvolution_Figures.aprx

Project No. : 60700987 Drawn: HW Checked: AM Approved: LB Date: 2025-07-15



PROJECT

Fosse Green Energy

CLIENT

Fosse Green Energy Ltd

CONSULTANT

AECOM Limited
Sunley House
4 Bedford Park
Surrey, CR0 2AP, UK
www.aecom.com

LEGEND

- DCO Site Boundary
- Land Not Included in Site Boundary
- Indicative Single Axis Tracker Layout
- PV Panels
- Solar PV Array Area
- Solar Station Compound
- Construction Compound
- Onsite Substation
- BESS Compound
- Retained Arable and Grassland
- Bird Mitigation Area - Permanent Grassland
- Bird Mitigation Area - Managed Arable
- Access Tracks
- Construction and Operation Access Point
- Emergency Access Point
- Public Right of Way
- Existing Tree
- Proposed Tree
- Proposed Belt Of Trees
- Proposed Hedgerow
- Existing Hedgerows

NOTES

Contains OS data © Crown Copyright and database right 2025
Contains data from OS Zoomstack

LEGISLATION

Regulation 5(2)(a) Infrastructure Planning (Applications: Prescribed Forms and Procedure) Regulations 2009.

ISSUE PURPOSE

DCO Submission

FIGURE TITLE

Indicative Single Axis Tracker Site Layout Plan

FIGURE NUMBER

Figure 3-2B SHEET 4

REV.

01

DOCUMENT REFERENCE

EN010154/APP/6.2.

This drawing has been prepared for the use of AECOM's client. It may not be used, modified, reproduced or relied upon by third parties, except as agreed by AECOM or as required by law. AECOM accepts no responsibility, and denies any liability whatsoever, to any party that uses or relies on this drawing without AECOM's express written consent. Do not scale this document. All measurements must be obtained from the stated dimensions.